



MK4 SMART SHIELD INSTALL INSTRUCTIONS

Once you receive your new Smart Shield you should have these parts:

- 1 Smart Shield
- 2 Oil Hole Covers
- 10 Speed Nuts (2 Spares)
- 10 Phillips Screws
- 2 Speed Nut Inserts

Tools You Will Need:

- Car Ramps or Jack Stands with Jack
- Torx T25 Screwdriver
- Phillips Screwdriver
- Small Hammer

Now that you have familiarized yourself with the parts of the skid plate and prepared the tools you will need to do the job, you're ready to get started.

Step #1: Drive your car onto a set of ramps or jack your car up and place jack stands under your car. Also put your emergency brake on and block the rear tires (we recommend using both the ramps and the jack stands). Start by removing all of the Torx T25 screws holding the plastic skid plate onto the car. Remove the stock plastic skid plate and leave the left and right engine bay shields in place.

Step #2: Now you will be installing the Speed Nuts on the plastic side shields. If your side shields already have speed nuts on them you can skip this step. Slide 4 Speed Nuts onto the holes located at the bottom of each side shield. Your side shields will need to be in good condition to install the Smart Shield and will need to be OEM from VW not the cheap aftermarket ones.

Picture A: Speed Nuts on the side shields.

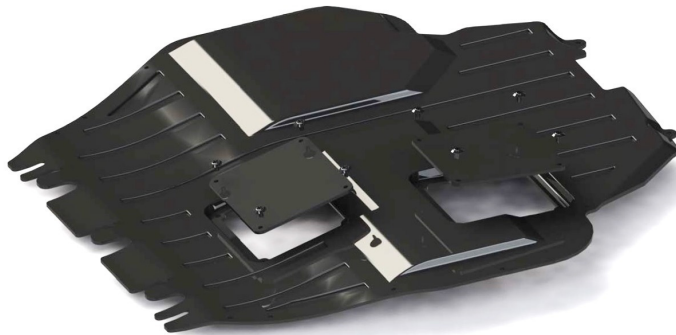


Set #3: Now you will need to install the 2 Speed Nut Inserts into the two rectangular holes in the lower sub frame. If your car already has the inserts, you can skip this step. With the prongs facing up push each Speed Nut Insert into its hole and tap in with a small hammer until flush with the frame.

Step #4: Now you will be putting the Smart Shield on your car. With the fingers of the Smart Shield facing towards the front of the car, slide the fingers into the plastic radiator shroud. Next thread two Phillips Screws into the rear two Speed Nut Inserts only 2-3 turns. Now install the last 8 Phillips Screws into both the right and left side shields until the Smart Shield is snug. Then you can go back and tighten the rear two screws until snug as well.

Step #5: Last of all you will install both oil covers. Start by pulling the threaded plastic push pins out of their housing. Hold the cover in place against the Smart Shield and push one housing through one of the holes in the oil cover and the hole in the Smart Shield. Next thread a push pin into the housing until snug and repeat for the other three. Once done you can install the other oil cover in the same manner.

Picture B: Showing the location of the push pins and oil covers.



Congratulations, you are done.

If you have any questions or concerns while installing this Smart Shield, please only contact the distributor you bought it from or ourselves as we are by far the most qualified to answer your questions. 250-963-3232

Copyrighted by: Evolution Import Inc
Not to be distributed